



Silicon Integrated Systems Corp.

SiS Touch Utility User Guide

Version 1.4

2024/10/29

Revision History

Version	Date	Commit	Author
V1.0	2024/08/28	Initial Version	Jason Wang Vincent Ting
V1.1	2024/09/20	Update for Touch Utility V5.3.8	Jason Wang Vincent Ting
V1.2	2024/09/26	Description of Adding the Main Touch / Sub Touch Identification Label Feature	Jason Wang Vincent Ting
V1.3	2024/10/17	Additional Notes on Mouse Mapping	Jason Wang Vincent Ting
V1.4	2024/10/29	Additional Touch Device Click-Linkage Display Description	Jason Wang Vincent Ting

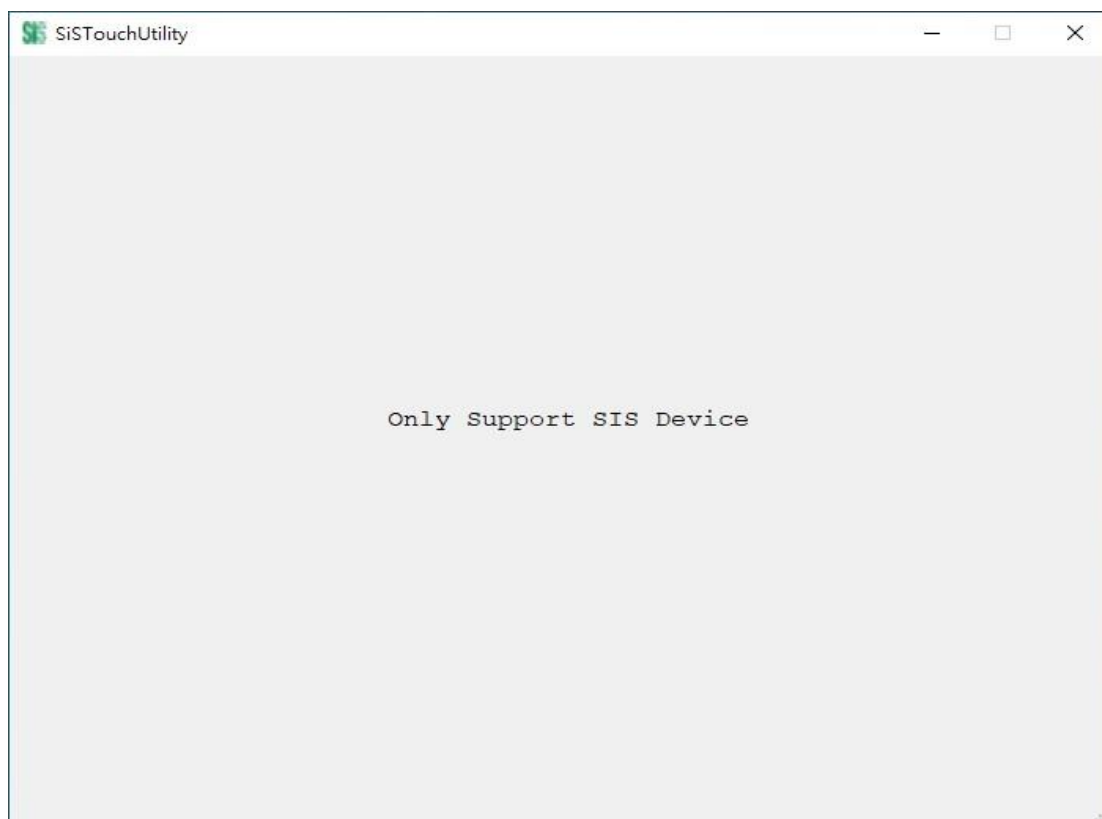


Contents

Revision History	1
Contents	2
1. Introduction	3
2. Supported Hardware and Operating Systems	3
3. Features and Operation Methods	4
3-1 Device Page Functionality	4
3-2 Setting Page Functionality	8
3-3 Detail Page Functionality	15
3-3 About Page Functionality	20
Legal Disclaimer	23

1. Introduction

SiS Touch Utility is an application independently developed by Silicon Integrated Systems (SiS), designed exclusively for use with SiS Touch ICs. It facilitates basic touch functionality mode switching, sound adjustments, and supports dual-screen touch calibration. Installing the SiS Touch Utility is simple and does not require an additional driver installation.



2. Supported Hardware and Operating Systems

- (i) Only compatible with SiS Touch ICs in the SiS95xx series.
- (ii) Applicable for systems with either a single-touch or dual-touch device.
- (iii) Supports operation on Windows 10 / Windows 11 operating systems only.

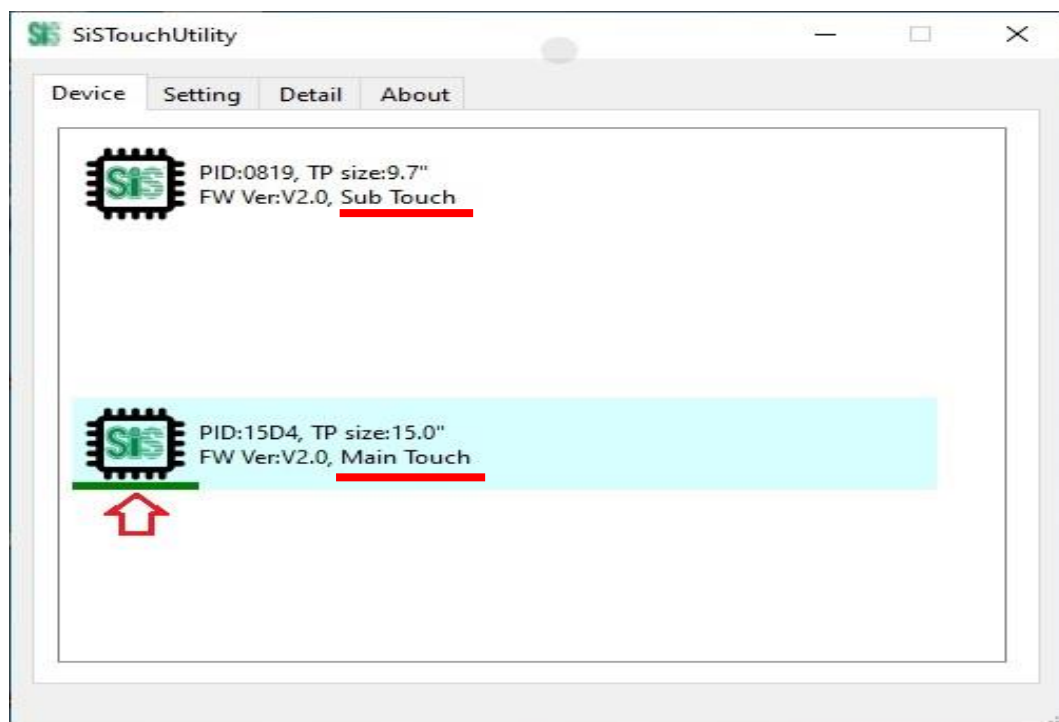
3. Features and Operation Methods

The features of SiS Touch Utility are explained in the following four sections.

3-1 Device Page Functionality

(1) Basic Device Function Description:

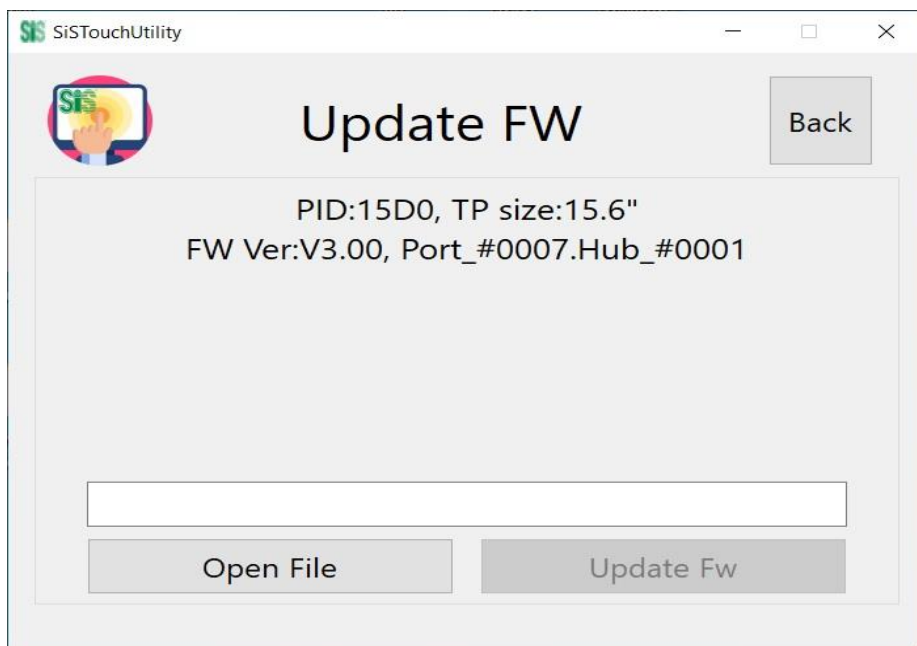
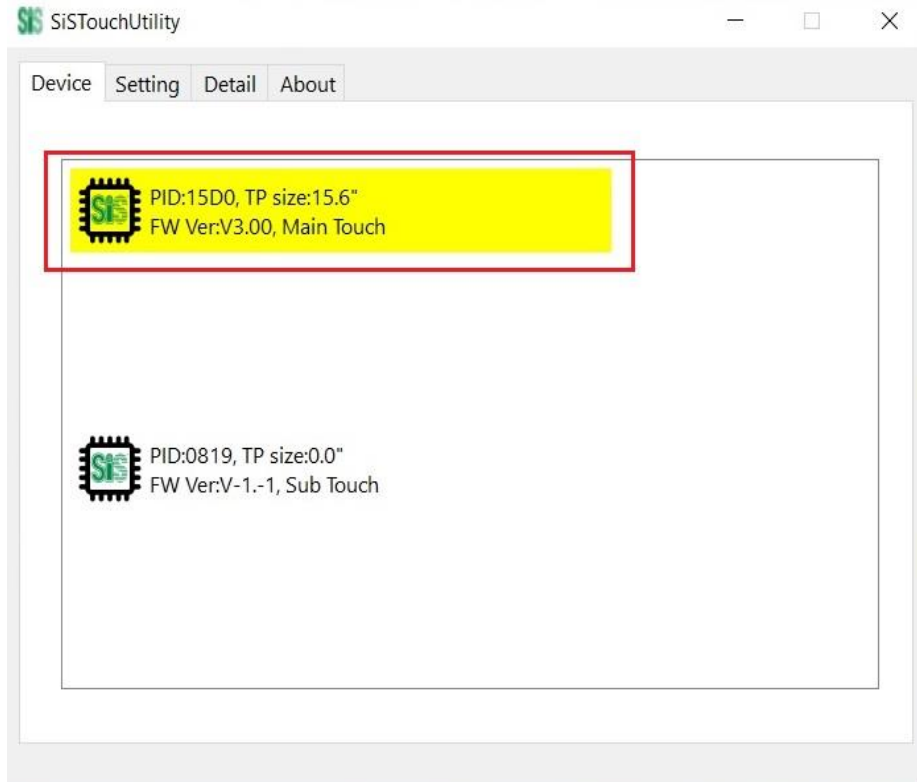
On the Device page, the initial screen will display information about the currently connected SiS Touch devices. For example, if two SiS touch devices are detected, details such as Touch device PID, TP size, FW version and Main Touch / Sub Touch Identification Label will be shown. When a device is selected in this window, the background color of the selected device will change. Additionally, when each touch device is clicked, it will interactively display a green underline.



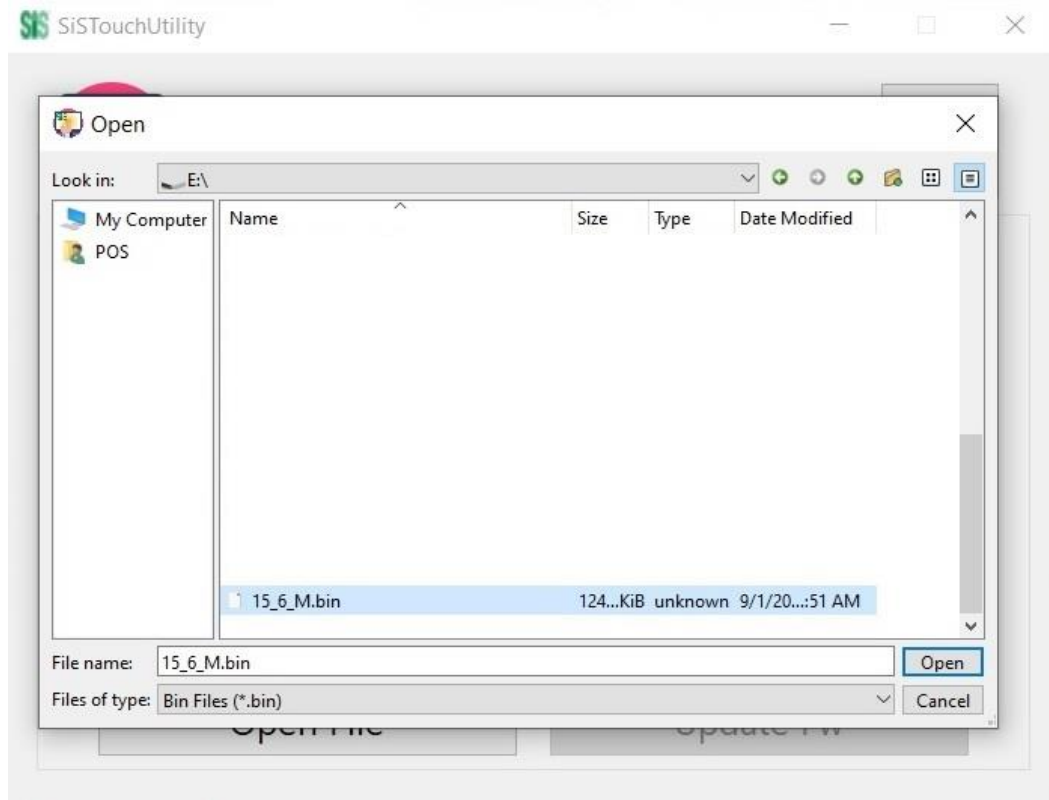
Note: To activate the Main Touch / Sub Touch identification label feature, you must first perform "Touch Mapping" and "Mouse Mapping."

(2) FW Update Operation Instructions:

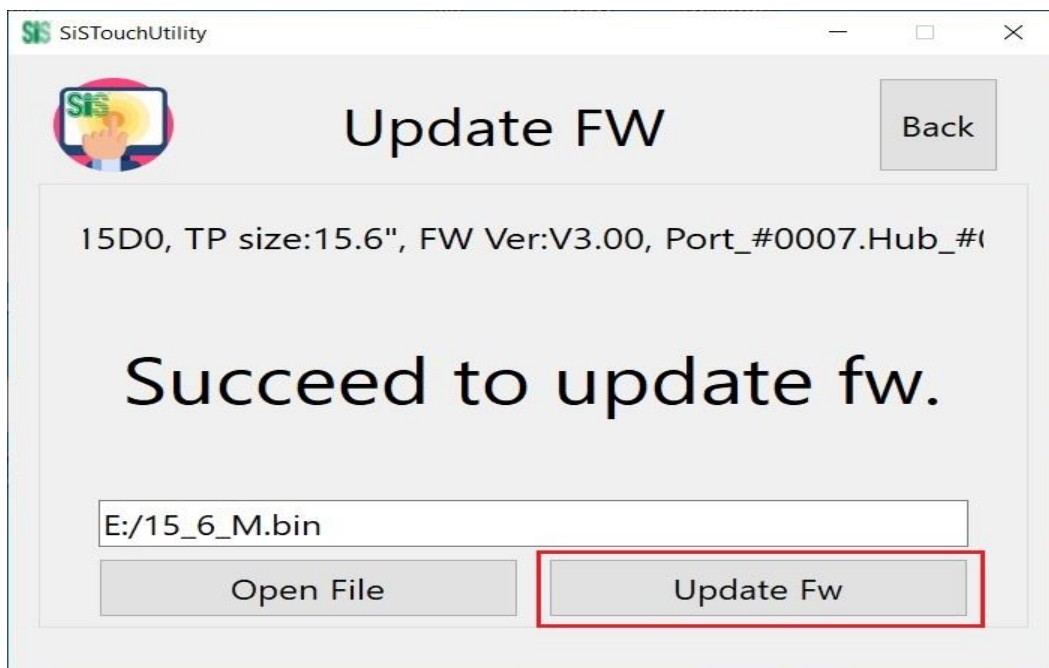
- (i) Click the device to be updated five times consecutively to open the FW update window.



(ii) Click “Open File” to open the folder and select the FW file (*.bin) path.



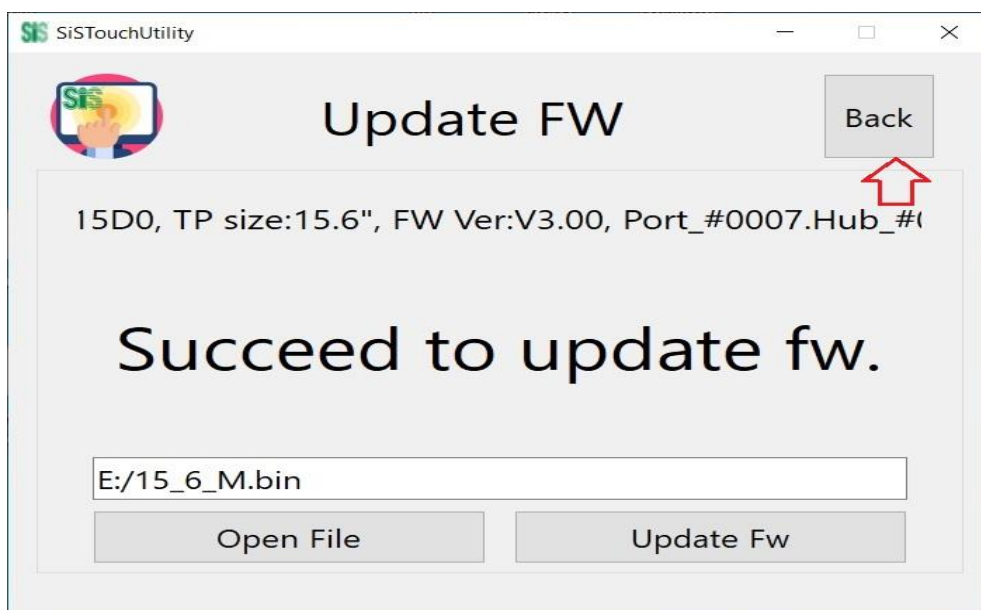
(iii) Click the “Update FW” icon to start the FW update process.



(iv) Do not touch the screen during the FW update process.



(v) After the FW update is complete, click the “Back” icon to return to the Device main screen.

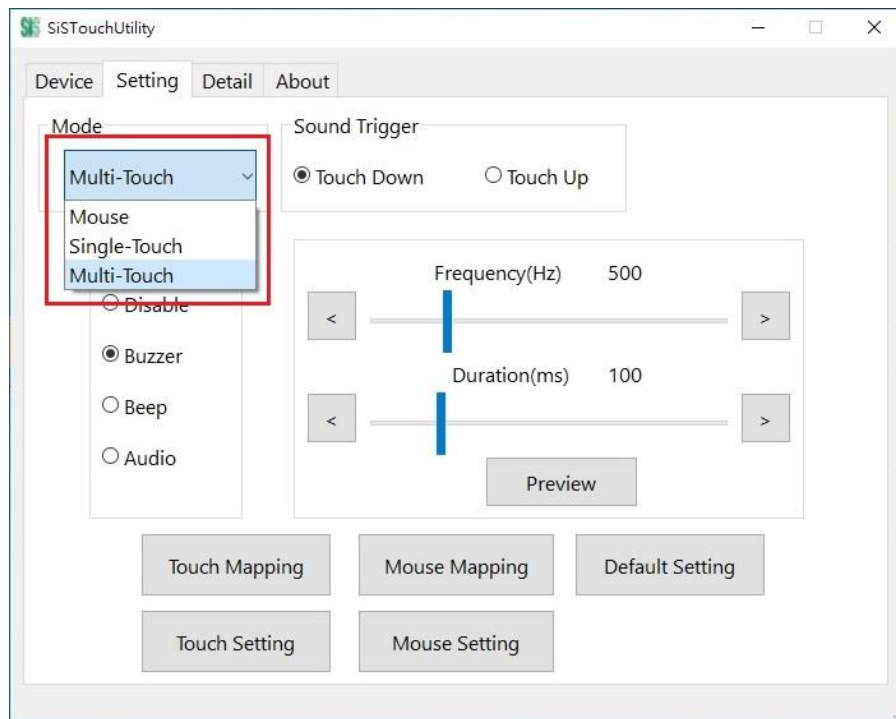


Note1: FW update is a hidden feature of the SiS utility tool. When using this function, ensure that the FW version used is provided by the manufacturer or distributor. Do not use unofficially provided FW to avoid device malfunction.

Note2: The FW update process will first check if the FW file's PID matches the PID of the device to be updated. If the tool detects a mismatch, the FW update will not proceed, indicating that the FW version is not suitable for this device.

3-2 Setting Page Functionality

- (1) "Mode" supports three touch modes: Mouse, Single-Touch, Multi-Touch. Click the icon below "Mode" to switch between these touch modes.

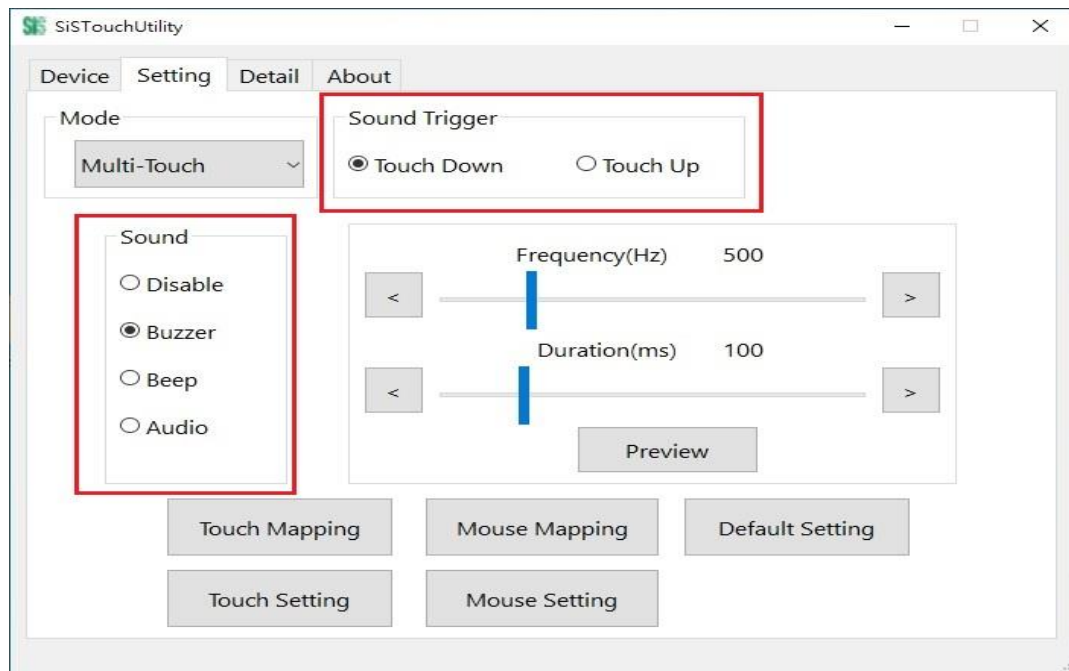


- (2) "Sound Trigger" allows you to choose when to emit sound based on touch conditions:

- Touch Down: Emits sound when a finger is pressed down.
- Touch Up: Emits sound when a finger is lifted.

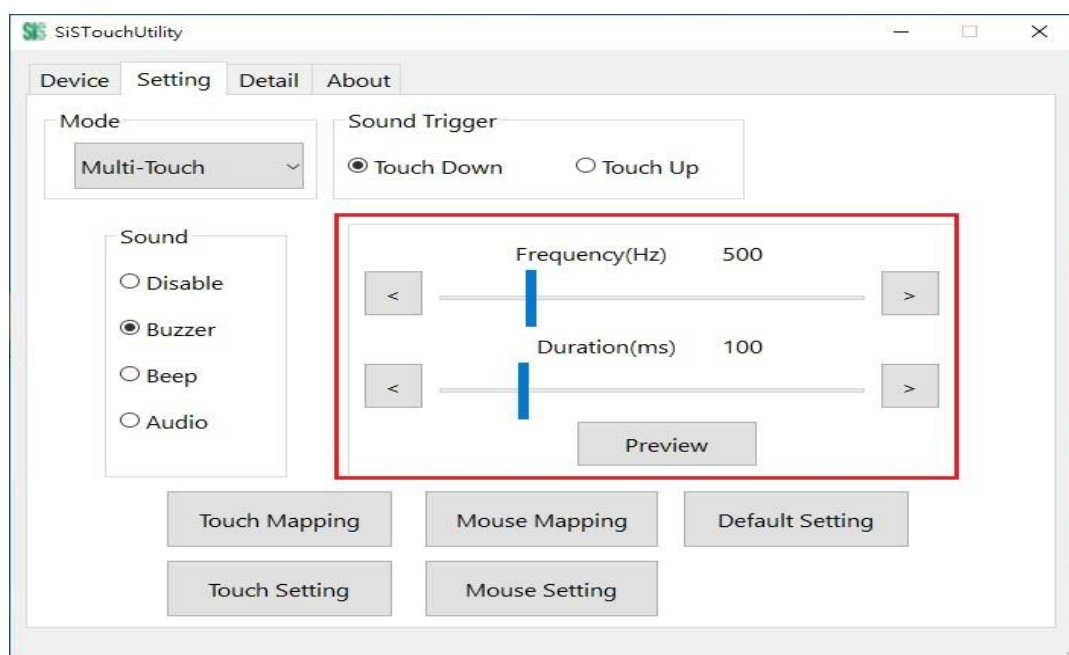
"Sound " sets the sound output mode:

- Disable: Mutes the system, no sound is emitted.
- Buzzer: Emits sound through the buzzer.
- Beep: Emits sound through the speaker.
- Audio: Emits customized sound effects.

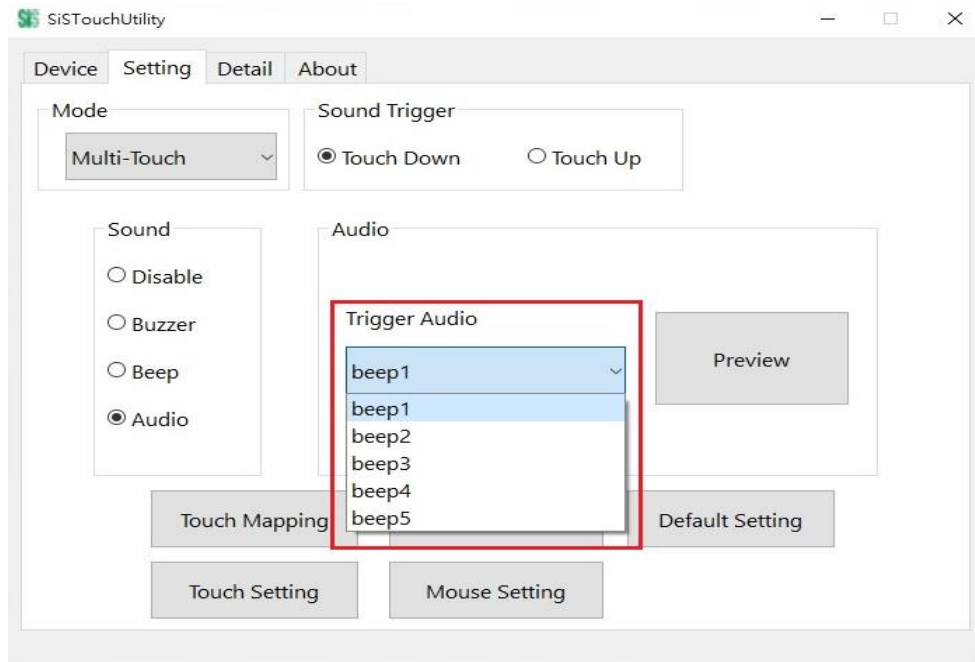


"Frequency (Hz) " adjusts the audio frequency range, adjustable from 100 to 2000 Hz. The slider bar step is 20 Hz, and the button step is 20 Hz per click.

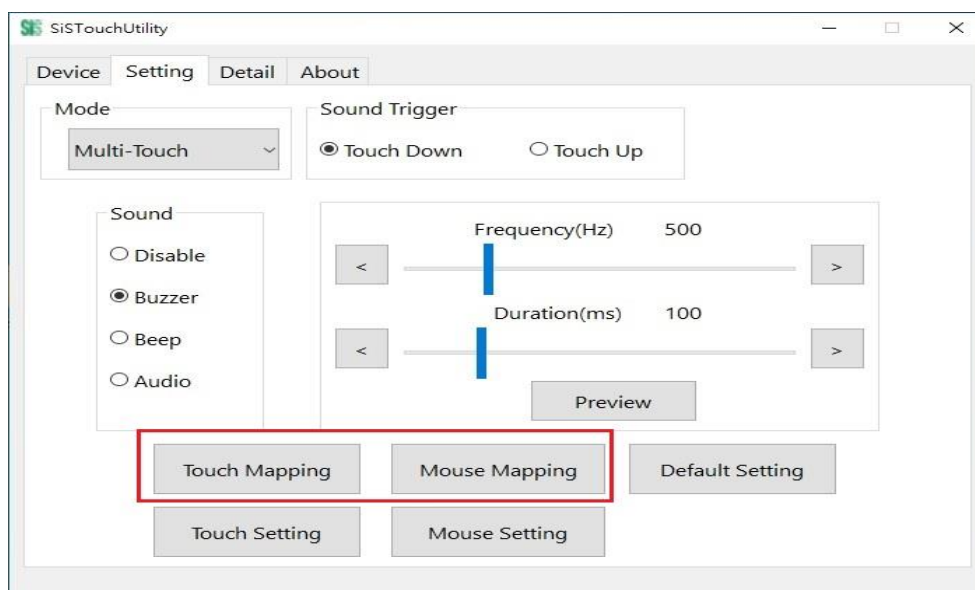
"Duration (ms) " sets the duration of the audio output, adjustable from 0 to 500 ms. The slider bar step is 20 ms, and the button step is 5 ms per click.



“Audio” allows you to select custom sound effects. SiS Touch Utility includes five built-in sound effects for selection. After choosing, press the “Preview” button to play the sound effect.

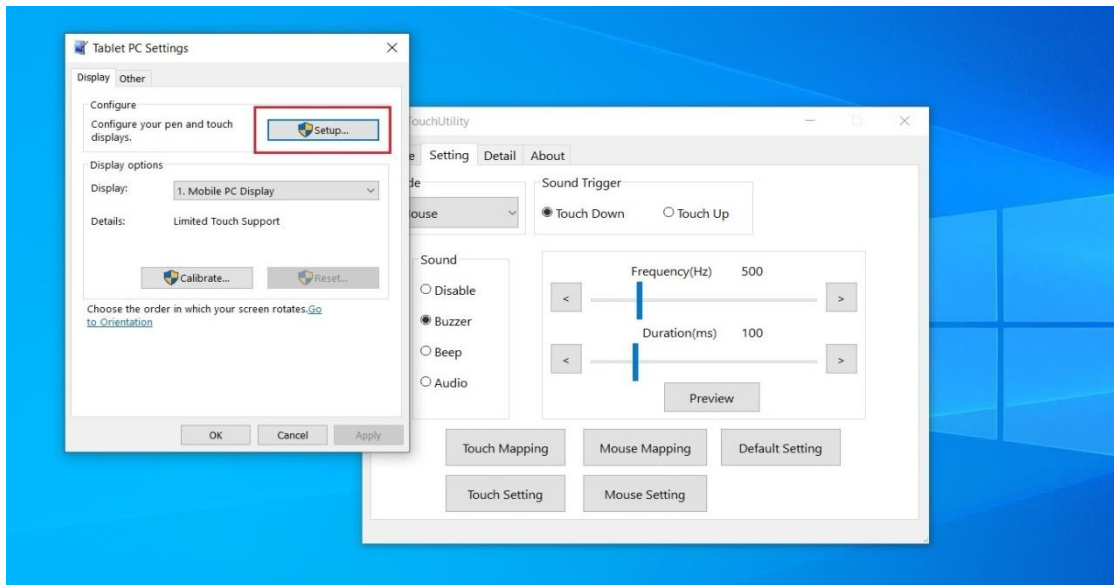


- (3) When using a dual-touch screen system, you must perform the mapping settings for the primary and secondary touch screens. Setup Order: Please perform 'Touch Mapping' first, and after completion, proceed with 'Mouse Mapping'!

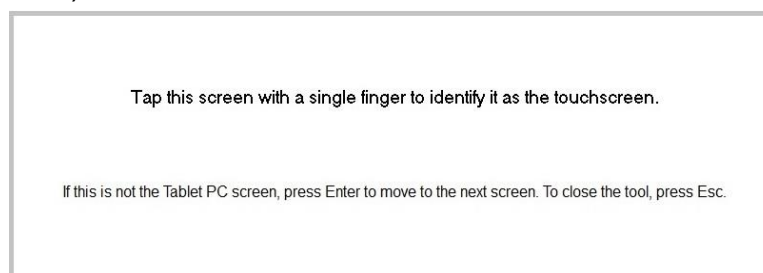


(i) Touch Mapping Setup Instructions:

- 1. Click “Touch Mapping” to open the built-in Mapping tool in Windows 10. Click “Setup” to start the dual-screen touch mapping configuration.



- 2. During Touch Mapping, a prompt will appear in the center of the primary screen. Click on it. To abort the mapping process, press the “ESC” key on the keyboard (the secondary screen will remain blank at this time).



- 3. After clicking, the following message will appear on the main screen. Please press the "Enter" key on the keyboard or press five fingers on the main screen (replacing the keyboard's "Enter" key) to proceed to the next step.



Press Enter to proceed to the next step to complete your configuration

- 4. After pressing "Enter" or using a five-finger press, please move to the secondary screen to perform the operation. At this point, the following message will appear on the secondary screen (the main screen will be blank). Please click on the secondary screen. Once the click is completed, both the main and secondary screens will return to the Windows 10 desktop, completing the Touch Mapping setup.

Tap this screen with a single finger to identify it as the touchscreen.

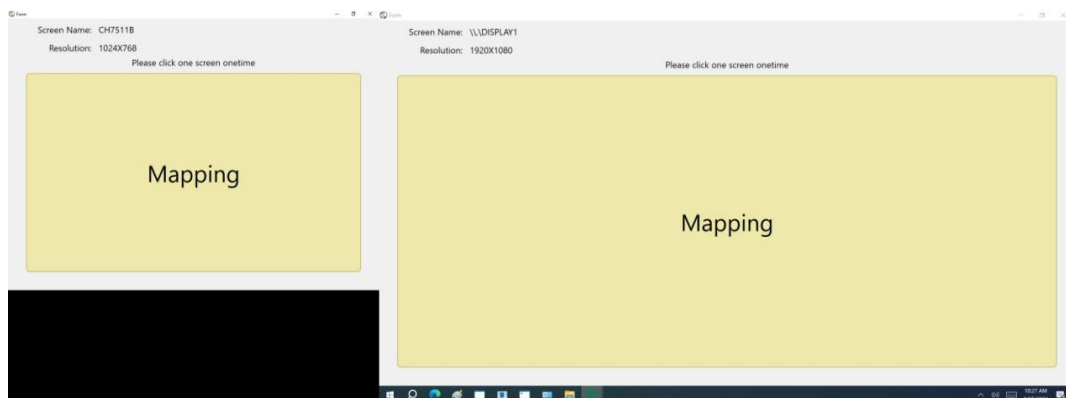
If this is not the Tablet PC screen, press Enter to move to the next screen. To close the tool, press Esc.

(ii) Mouse Mapping Setup Instructions:

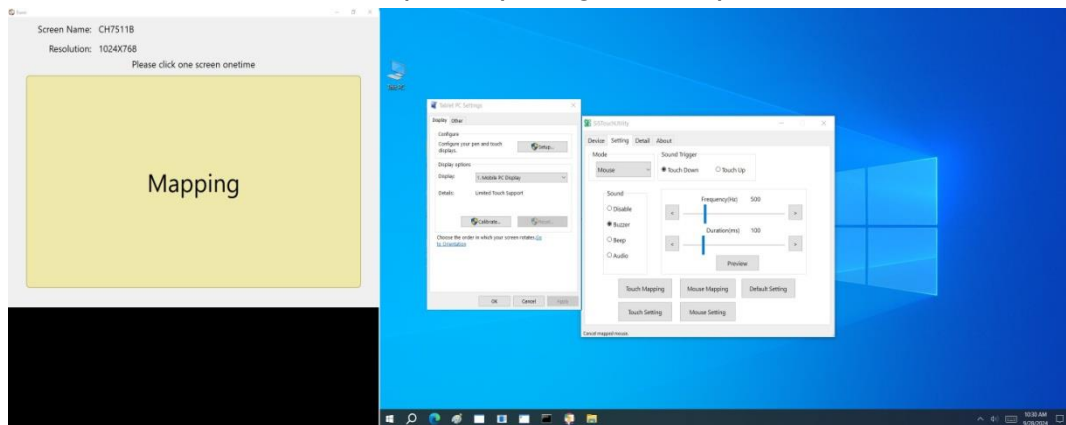
- 1. Click "Mouse Mapping" to see the primary and secondary screens displaying prompts (blue for the primary screen, white for the secondary screen). Click within the blue frame on the primary screen.

Sub Touch Screen Display

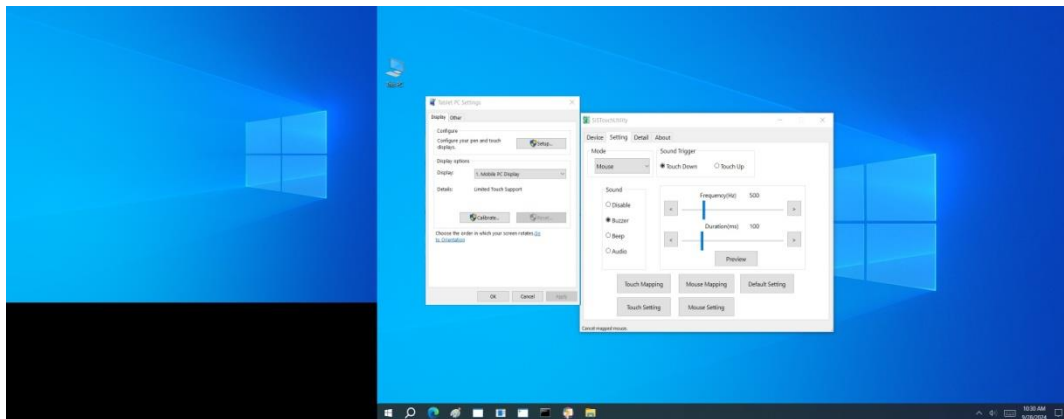
Main Touch Screen Display



- 2. After clicking, the primary screen will return to the Windows desktop, and the secondary screen will retain its original display. Click within the white frame on the secondary screen, and the screen will return to the Windows desktop, completing the setup.



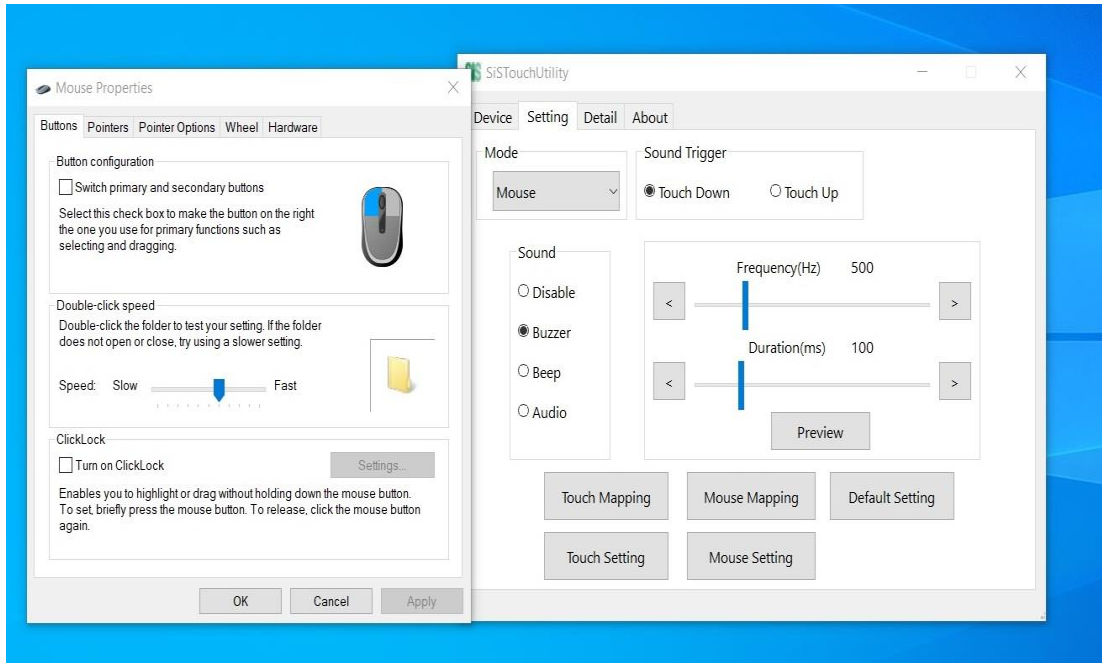
- 3. Setup completed.



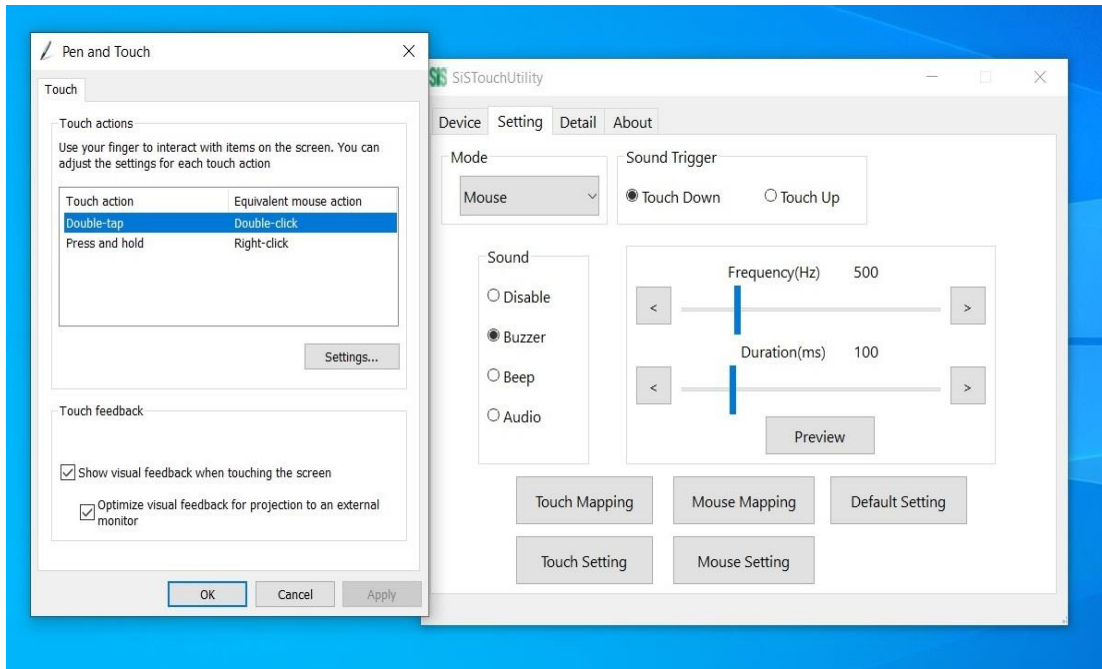
Note:1. Whenever the settings for the primary/secondary screens change or the number of connected screens increases or decreases, please re-run "Touch Mapping" and "Mouse Mapping".

2. Before performing mouse mapping, please ensure that touch mapping has been correctly completed!
3. The five-finger press gesture to replace the "Enter" key will only work when the "Max Touch Number" setting is greater than or equal to five.

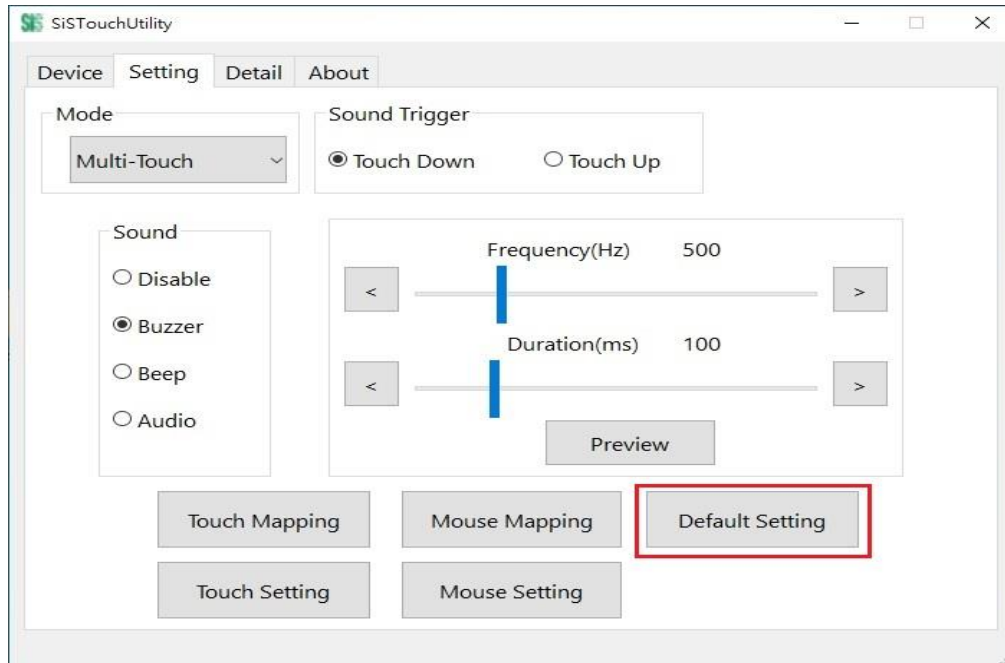
- (iii)“Mouse Setting”: Calls the operating system's Mouse settings menu.
Adjust settings as needed.



- (iv)“Touch Setting”: Calls the operating system's Touch settings menu.
Adjust settings as needed.

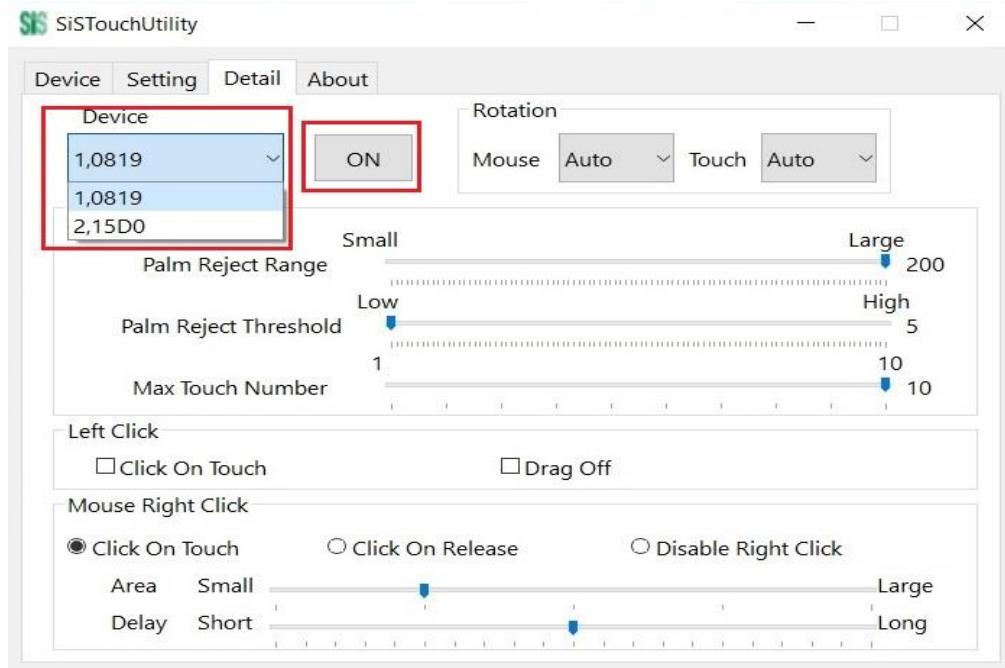


(v) “Default Setting”: Restore all settings to the initial configuration.

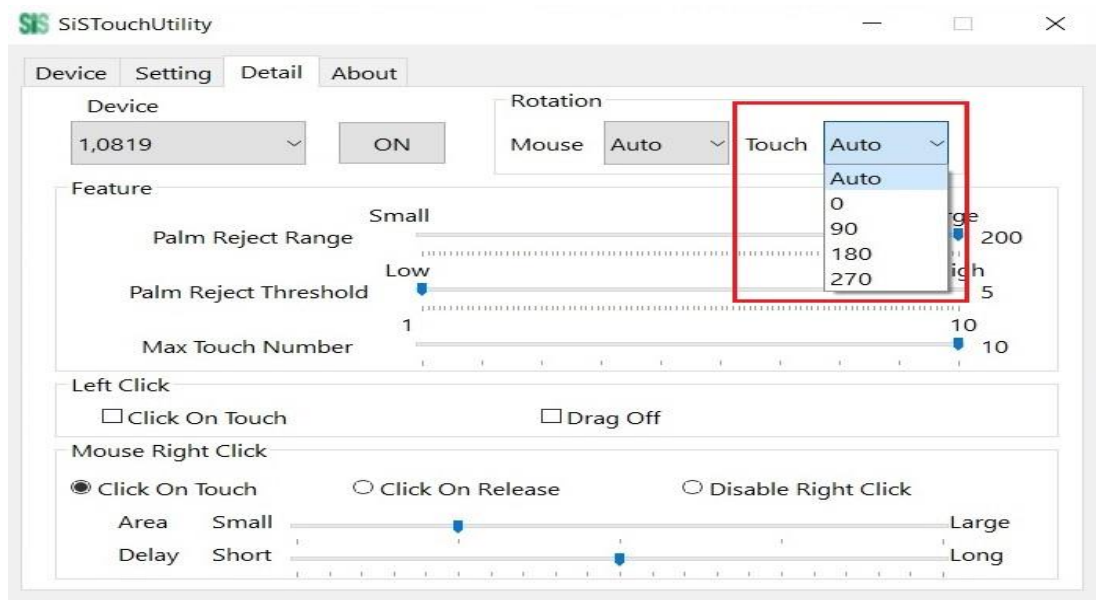
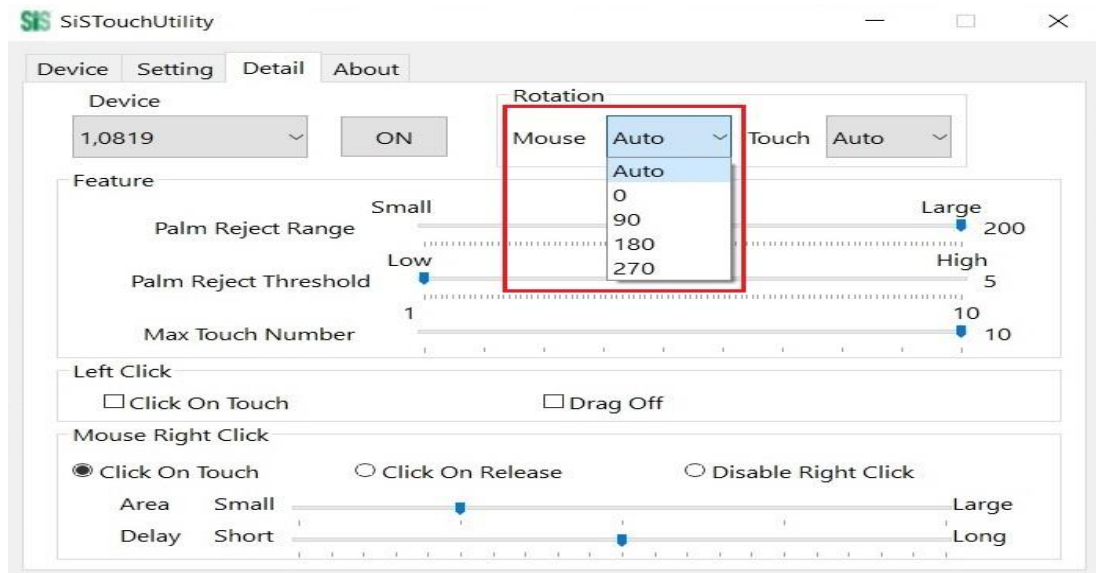


3-3 Detail Page Functionality

(1) “Device”: Selects the currently connected touch device and controls whether the device is active or inactive.

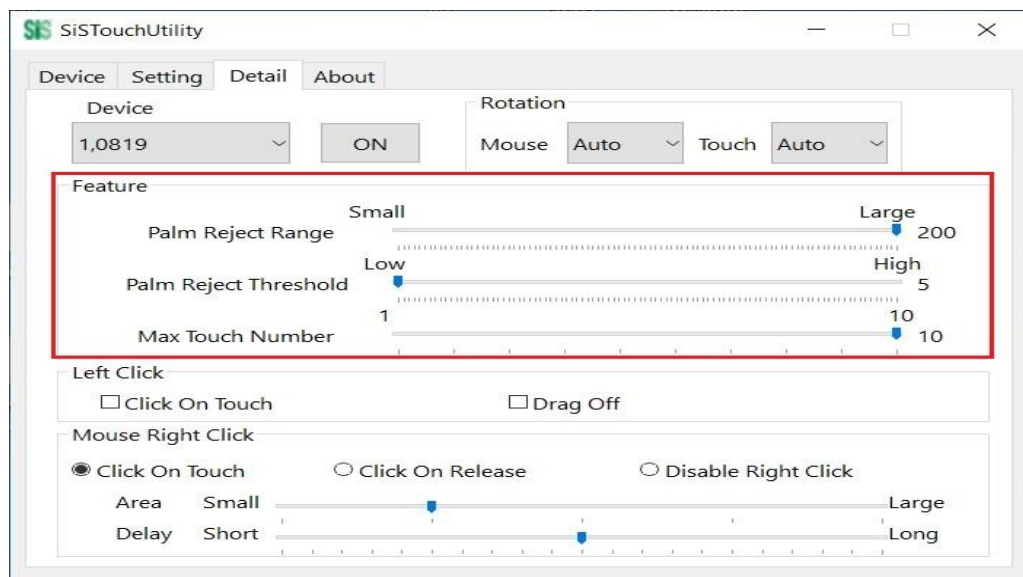


- (2) “Rotation”: Allows you to choose the screen to rotate and set its mouse or touch coordinates from 0 to 270 degrees. Generally, setting it to “Auto” is recommended.



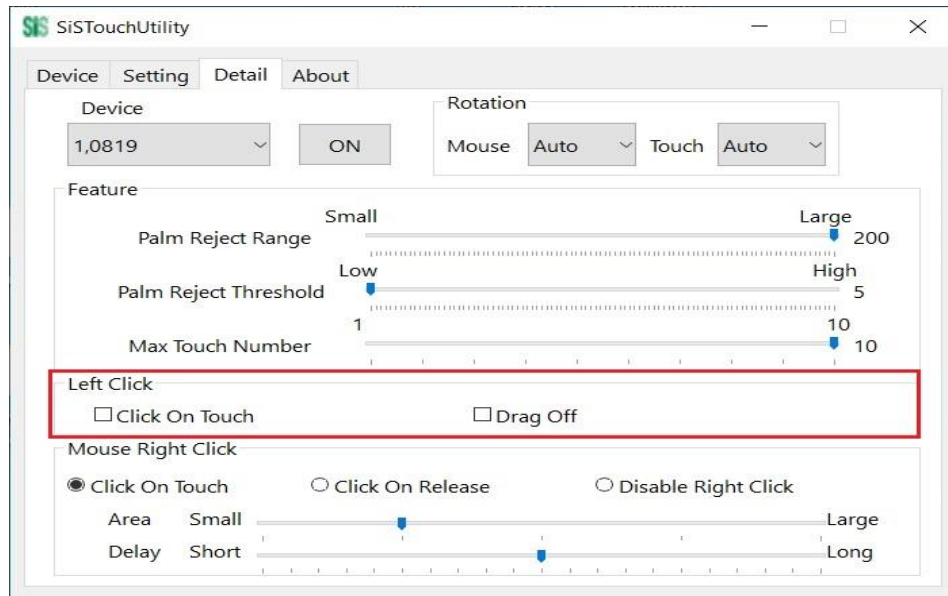
(3) “Feature”:

- Palm Reject Range: Sets the size of the area for palm or finger rejection during incorrect touch operations to prevent false touches.
- Palm Reject Threshold: Sets the sensitivity for triggering the Palm Rejection feature. A higher value makes it less likely to trigger Palm Rejection.
- Max Touch Number: Sets the maximum number of touch points allowed simultaneously. This feature is only used when the “Mode” is set to Multi-Touch. Adjusting this value has no effect when set to Mouse or Single-Touch.



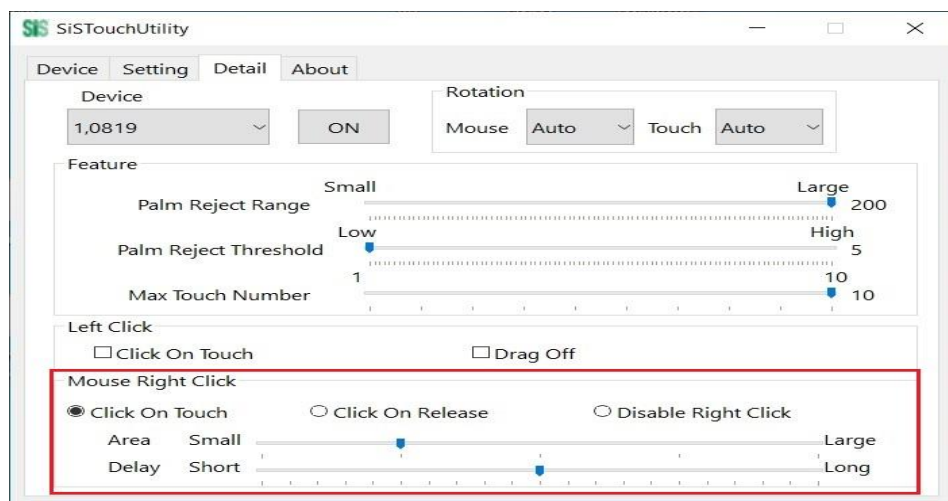
(4) “Left Click”: Configures the touch simulation for Mouse left-click functionality.

- Click on Touch: Enables Mouse click functionality on touch.
- Drag Off: Disables touch drawing functionality.



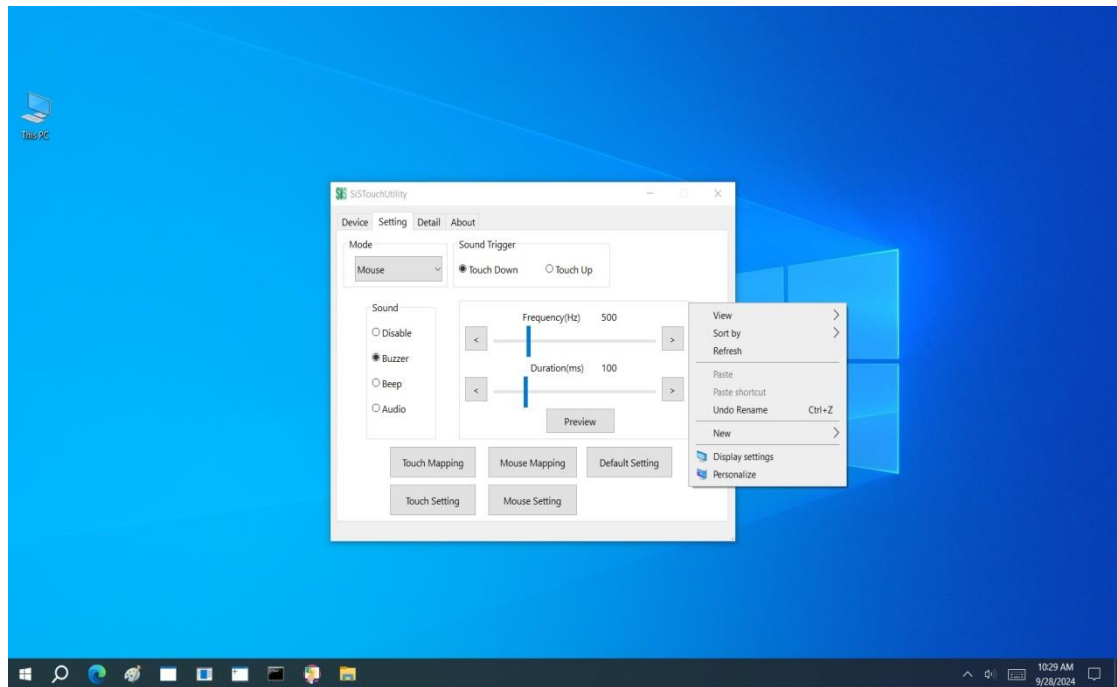
(5) “Mouse Right Click”: Configures the touch simulation for Mouse right-click functionality (Note: This setting only functions when “Mode” is set to Mouse).

- Click on Touch: Simulates Mouse right-click on touch.
- Click on Release: Simulates Mouse right-click on release.
- Disable Right Click: Disables the Mouse right-click simulation.



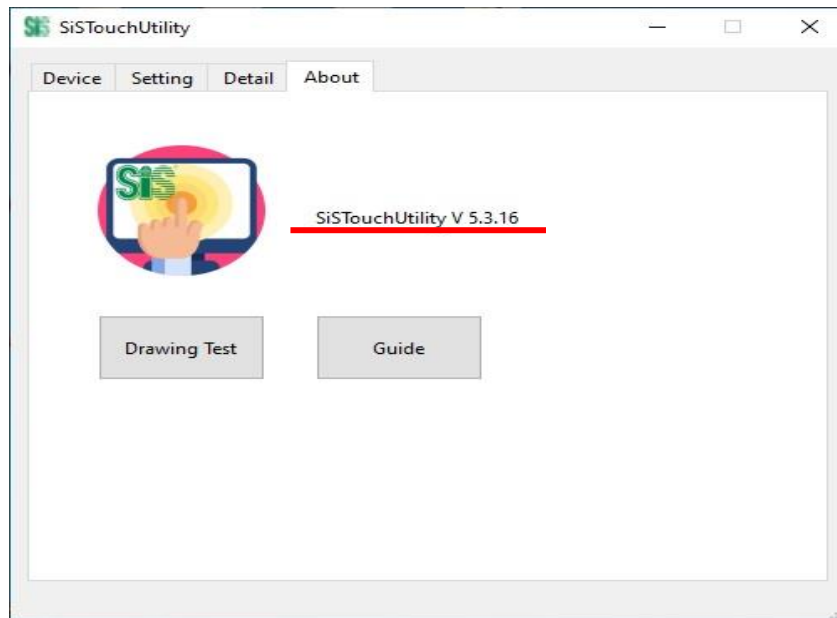
- Area: Sets the size of the finger press area to trigger the Mouse right-click simulation.
- Delay: Sets the duration of the finger press to trigger the Mouse right-click simulation.

The image shows the pop-up window in Windows 10 after simulating a Mouse right-click.

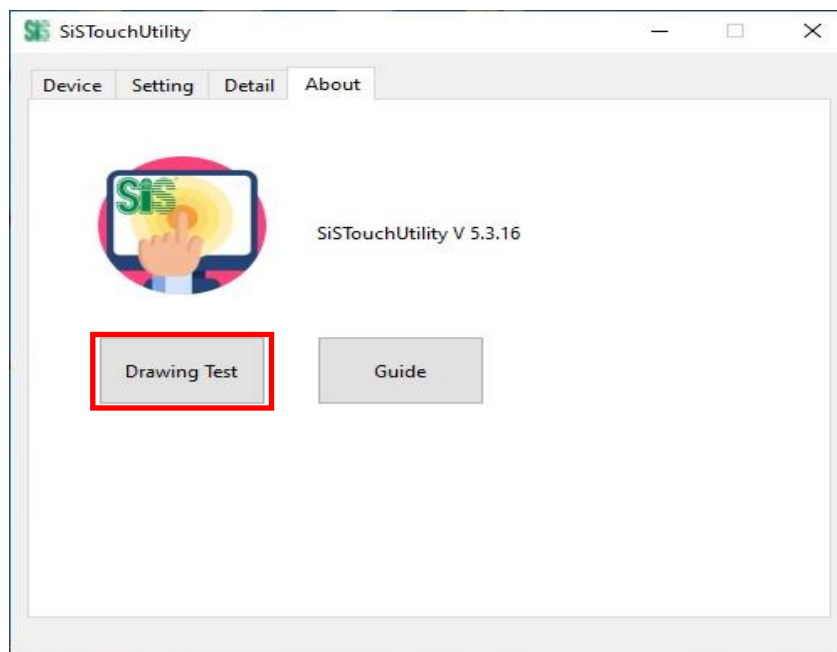


3-3About Page Functionality

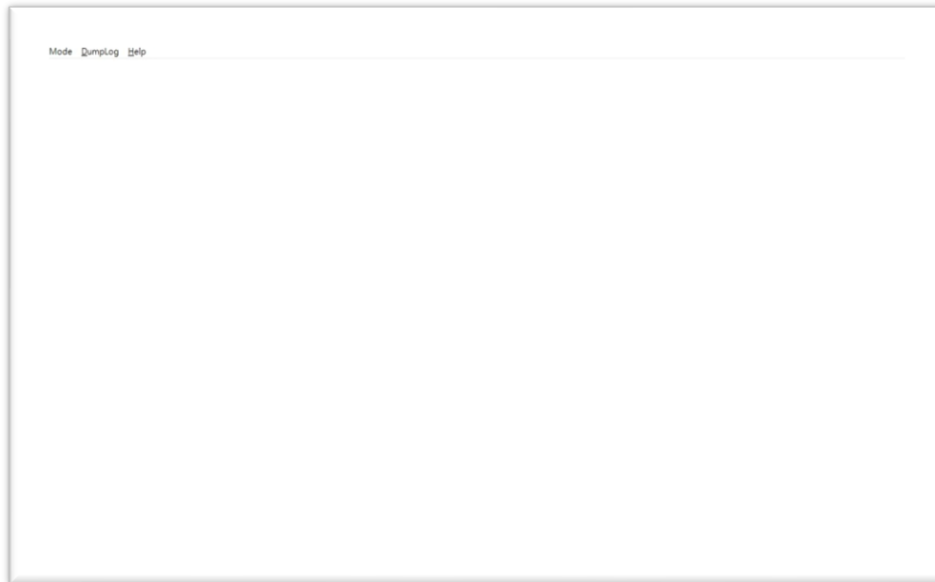
(1) The About page provides version information for SiS Touch Utility.



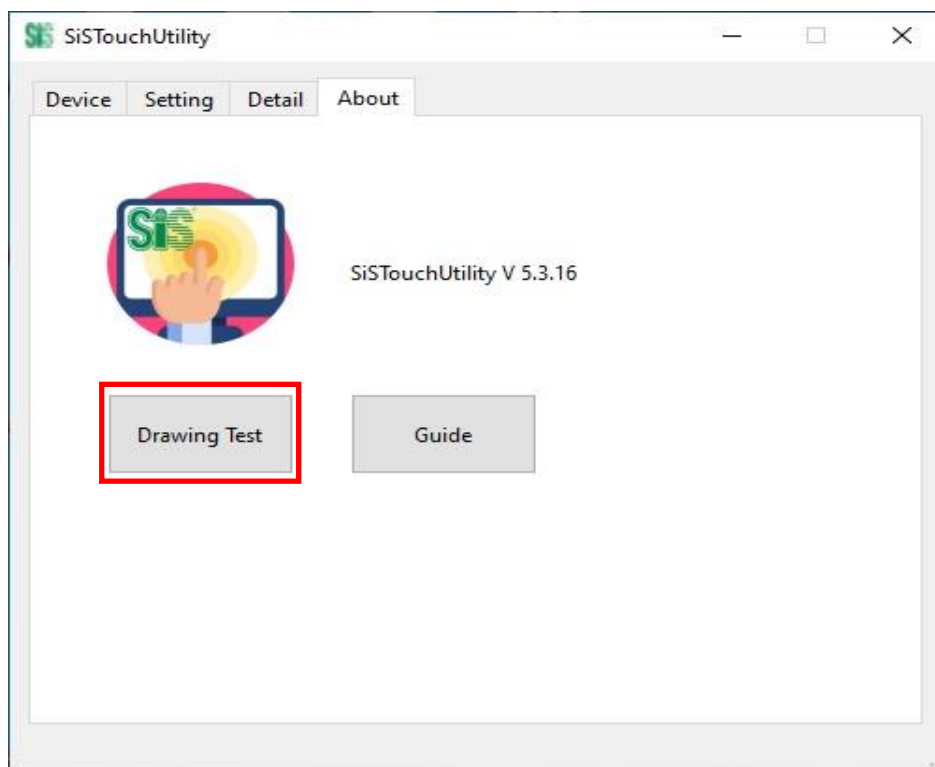
(2) Click 'Drawing Test' to open Touch Line Drawing Test Tool.



The Drawing Test program screen is as follows. Please switch to Touch Mode or Multi-Touch Mode and proceed with the test:

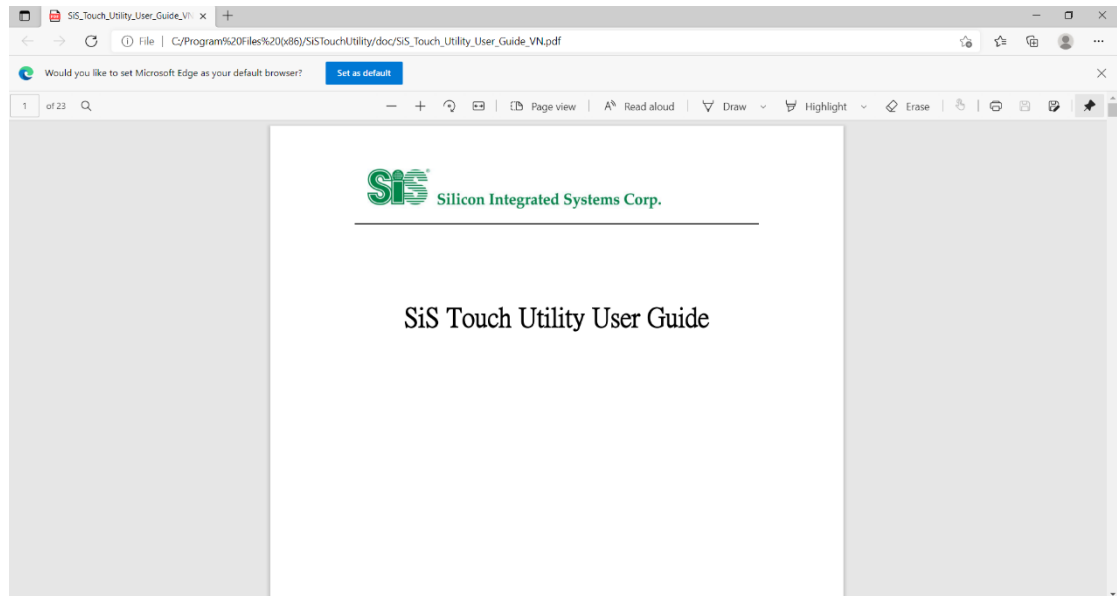


(3) Click 'Guide' opens the user guide.







Silicon Integrated Systems Corp.





Legal Disclaimer

Information in this document is provided for the evaluation of the potential business between Silicon Integrated Systems Corp. and you or other purposes agreed by Silicon Integrated Systems Corp. No license, express or implied, by estoppel or otherwise, to any rights or interests, including but not limited to intellectual property rights, is granted by this document.

SiS, , , HyperStreaming, Mirage, MuTIOL, 妙渠, Xabre, HyperZip, SiSHyperZip Connect, PepLink, Glamo, CubicLook and MotionFixing are trademarks or registered trademarks of Silicon Integrated Systems Corp.

Other names and brands may be claimed as the property of others.

Copyright © (2024), Silicon Integrated Systems Corp. All rights reserved.