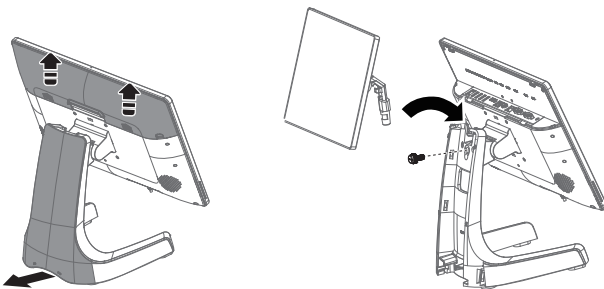


# Installation Options

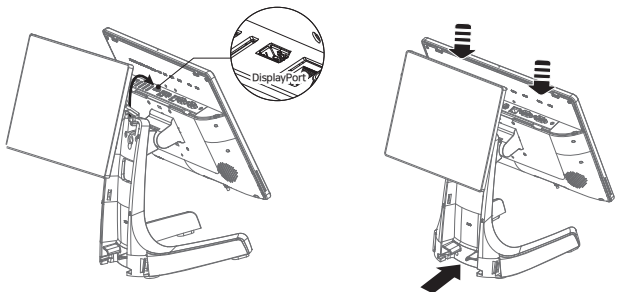
## 2nd Display

⚠ Please turn it on after connecting all the option items.

- 1 Please disassemble I/O cover and stand rear cover.
- 2 Please strongly tighten the plastic bolt at the rear side of stand after inserting the round-edge part of 2nd display cradle into the hole between POS system and stand.

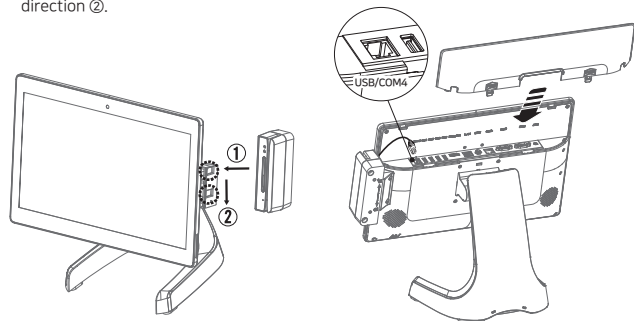


- 3 Please insert cable into display port out of I/O ports.
- 4 Please assemble I/O cover and stand rear cover.



## Card Reader

- 1 Please insert Card Reader at the groove in monitor to the arrow direction ① after disassembling I/O cover and set it well by pushing to the arrow direction ②.
- 2 Please close I/O cover after inserting the cable into COM4/USB port of I/O ports.



# Specification

Model	A-250
System	
Operation System	Android 8.1
Processor	Rockchip RK3288 (Quad-core Cortex-A17)
Storage	eMMC 16GB
Sytem Memory	DDR3L 2GB
Primary Display	15.6 inch 1920x1080 TN display
Touch panel	True-Flat Capacitive 10 Point Multi-touch
Speaker	2Wx 2 Channel/ Stereo
Network	
WiFi	802.11b/g/n 2.4 GHz
Blue Tooth	Bluetooth 4.2
Ethernet	1x RJ45 ethernet 10Mb/100Mb/1000Mb
I/O Interfaces	
External I/O Ports	2 x RS232 (DB9)   1 x RJ50   1 x Stereo + Mic Audio jack 3.5mm 1 x DC Jack (5.5 /2.5) screw type   1 x RJ45 (LAN)   1 x Display port 4 x USB 2.0 (Type A), 1 x MicroUSB (ADB)   1 x RS232 + USB (RJ11)
2nd Display	1 x DP, included DP signal + 1 x USB + 12V, supported HDMI, DVI, VGA
Peripheral Options	
2nd Display	9.7" or 15" WLED Backlight (1024 x 768 Resolution)
Card Reader	IC Reader & MSR (ISO7816 - Support All Track)
Camera	CMOS Sensor 5M pixels, AF (optional)
Physical Dimension	
Dimernsion (W x D x H)	382 X 220 X 354 (mm)
Weight	4.0 Kg
Environment	
Power Supply	AC Adapter, 12V/5.0A DC plug screw lock type, Power cord 1.8M
Operation Temperature	Operating: 0 ~ 50°C
Storage Temperature	Operating: -20 ~ 70°C

⚠ This user manual is provided for informational purposes and cannot be reproduced or distributed without consent under the Copyright Act. Specifications in the user manual are subject to change without prior notice.

imu inc. Hardware Brand P2C | Software Brand UP SOLUTION®  
#609, 115, Gasan digital 2-ro, Geumcheon-gu, Seoul, 08505, Republic of Korea  
Tel. +82-70-4469-3781 Fax. +82-2-2107-3364 e-mail. sales2@im-u.co.kr website. www.p2c.co.kr

# Installation Guide

## A-250 All-in-One POS System



# Safety Precautions

Be sure to read the Safety Precautions before using the POS system.

- Before connecting, make sure the operating voltage is AC100 ~ 240V. Otherwise, you may damage the system.
- Do not install the system in an extremely hot or cold place.
- Avoid exposing the product in direct sunlight or in an enclosed space for a long period of time.
- Be careful not to place the system near other high-frequency electromagnetic devices; there is a strong possibility it will lead to a system malfunction or system error.
- Do not place heavy objects on the system.
- Please do not allow external substances to be contaminated inside the system.
- Do not change the motherboard's battery by yourself. It can damage the system.
- Before disassembling the system, disconnect all power and cables.
- Do not remove or repair the system by yourself. We highly recommend an engineer's assistance or an experienced technician to open the system, especially the LCD and touch panels which could be easily broken.
- An electrical outlet is needed near the device and it should be easily accessible.
- Risk of explosion if battery is replaced by an incorrect type.  
Replace only with the same type of batteries recommended by the manufacturer.
- This device complies with the EMC (Electromagnetic Compatibility) Regulations, for business purposes. Distributors and users are advised of this matter.
- Do not use excessive force when using or pressing the touch panel.  
Do not use objects with sharp edges on the touch panel.
- Please exchange the equipment if you mistakenly sold or purchased this product.
- Cleaning and Maintenance is relevantly necessary for POS terminal to be operated well.

## ▲ POS Terminal Security Guideline

### Operating System Security

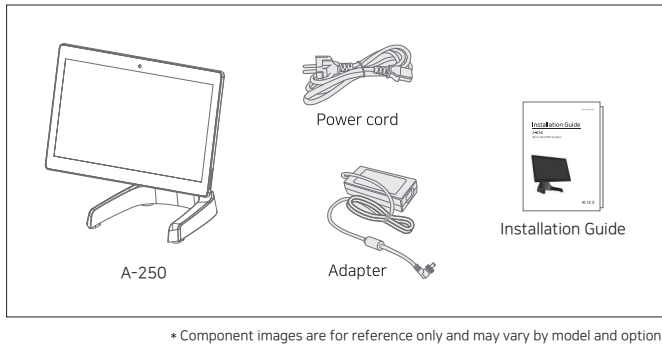
System-provided and managed by the operating system's default security settings must be configured.

## ▲ Touch Screen Security Guideline

Please take special care with the touch panel as it is vulnerable to scratches.

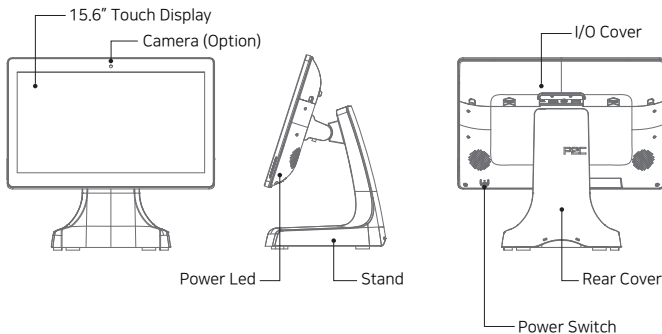
- Do not use excessive force when using or pressing the touch panel. Do not use objects with sharp edges on the touch panel.
- Be careful not to spill any liquid on the screen.
- Turn off the power switch and unplug all cables before cleaning the screen and/or the system.
- Use a soft, clean, dry cloth for cleaning the system, and do not use chemicals or detergents.

# Package Contents



# Configuration

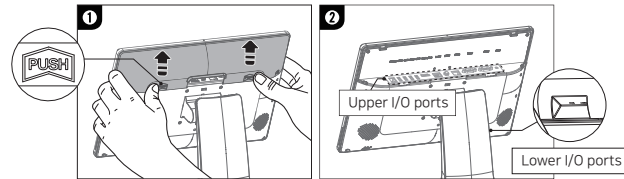
## Front/Side/Rear view



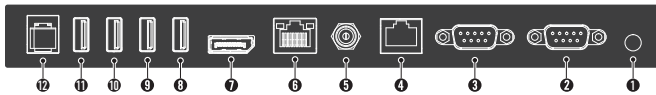
# I/O Ports

## I/O Cover Disassembly

- ▲ Please proceed with I/O ports connection after powering off the system.
- 1 I/O cover will be disassembled by pushing the "PUSH" part of both sides.
- 2 Please check I/O port position before connecting Input and Output Port .



### Upper I/O ports



### Lower I/O ports



※ I/O ports can be changed based on models, specifications, options.  
\* ②, ③, ④, ⑤, ⑥ special-purpose port  
⇒ From the RJ45 port supply to power connector used by RJ50 plug.

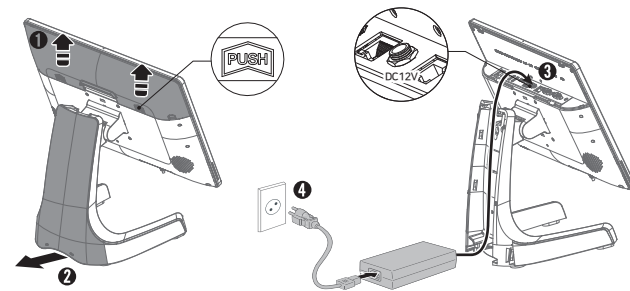
RJ45 Pin Map 정보		
	Signal Name	PJ45
	DCD	1
	DSR	2
	TXD	3
	RXD	4
① ~ ⑧ : RJ45	RTS	5
	CTS	6
	GND	7
	DTR	8
⑨ ~ ⑫ : RJ50		

Description		
① Audio	⑥ LAN	⑪ USB4
② Serial(DB9) - COM1	⑦ DisplayPort	⑫ Card Reader(RJ11) - USB/COM4
③ Serial(DB9) - COM2	⑧ USB1	⑬ SD CARD
④ Serial(RJ45/RJ50) - COM3	⑨ USB2	⑭ MICRO USB
⑤ DC 12V	⑩ USB3	

# System Connection and Power on

## Power Cord Connection

- ▲ Please connect power addptor DC jack and power cord by turns after all option items are connected.
- 1 I/O cover will be disassembled by pushing the "PUSH" part of both sides.
- 2 Please disassemble it by pushing up stand rear cover.
- 3 Please insert power adaptor cable by turning it into DC 12V port at upper I/O ports.
- 4 Please connect power cord after assembling it in a reverse way of disassemble.



## Power on

- ▲ Please turn the power on after installing all optional items.

After connecting the DC Plug to POS, Plug in. The power switch (button) on the left side of the rear, and the power is turned on when the button pressed. Led lamps on the left and right are turned on.

- 1 Power Switch(BUTTON)
- 2 Power Led(GREEN)

